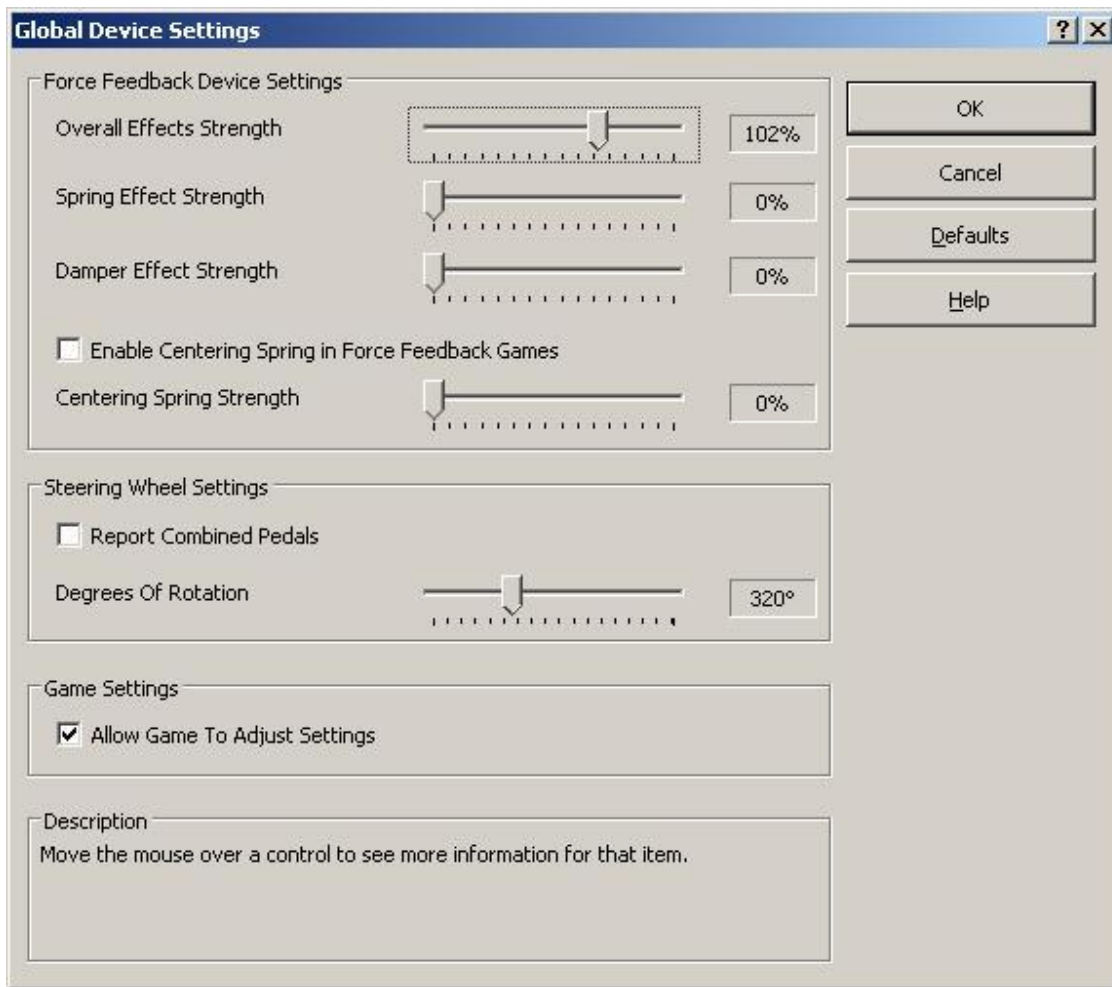


These are my RealFeel Settings and instructions for using the on-board adjustments

I first adjusted the G27 control panel as shown below. The MOMO may have the same settings



Next, I edited the real feel settings and made the following the defaults. My ini files was located in: c:\program files\rfactor\RealFeelPlugin.ini

[General]

```
RealFeelsOn=True  
ConsoleEnabled=False  
ConsoleRepeatDelay=0.100000  
SpeechEnabled=True  
KeyRepeatDelay=0.100000  
SteerForceInputMax=11500.000000  
MinSpeed=10.000000  
LogEnabled=False  
DefaultMaxForceAtSteeringRack=1500.000000  
DefaultSteeringDamper=2500.000000  
DefaultSmoothingLevel=4
```

[F1 2006]

```
MaxForceAtSteeringRack=-4000.000000  
SteeringDamper=11500.000000  
FFBMixerRealFeelPercent=100.000000  
SmoothingLevel=1
```

And finally, you can use the following sheet to make adjustments from within the car

